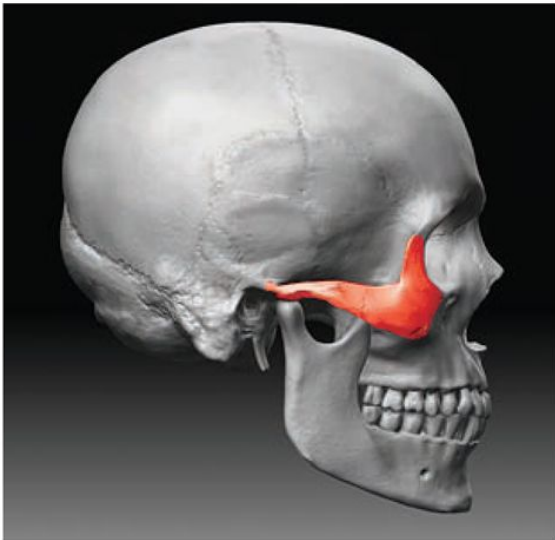


Field Expedient Cheek Riser

In this article I show how to add a Cheek Riser to a rifle.

I have watched many shooters bobblehead around trying to achieve a good sight picture. I believe that if we get shooters locked on cheek weld early in the day, they can focus more on improving their Marksmanship.

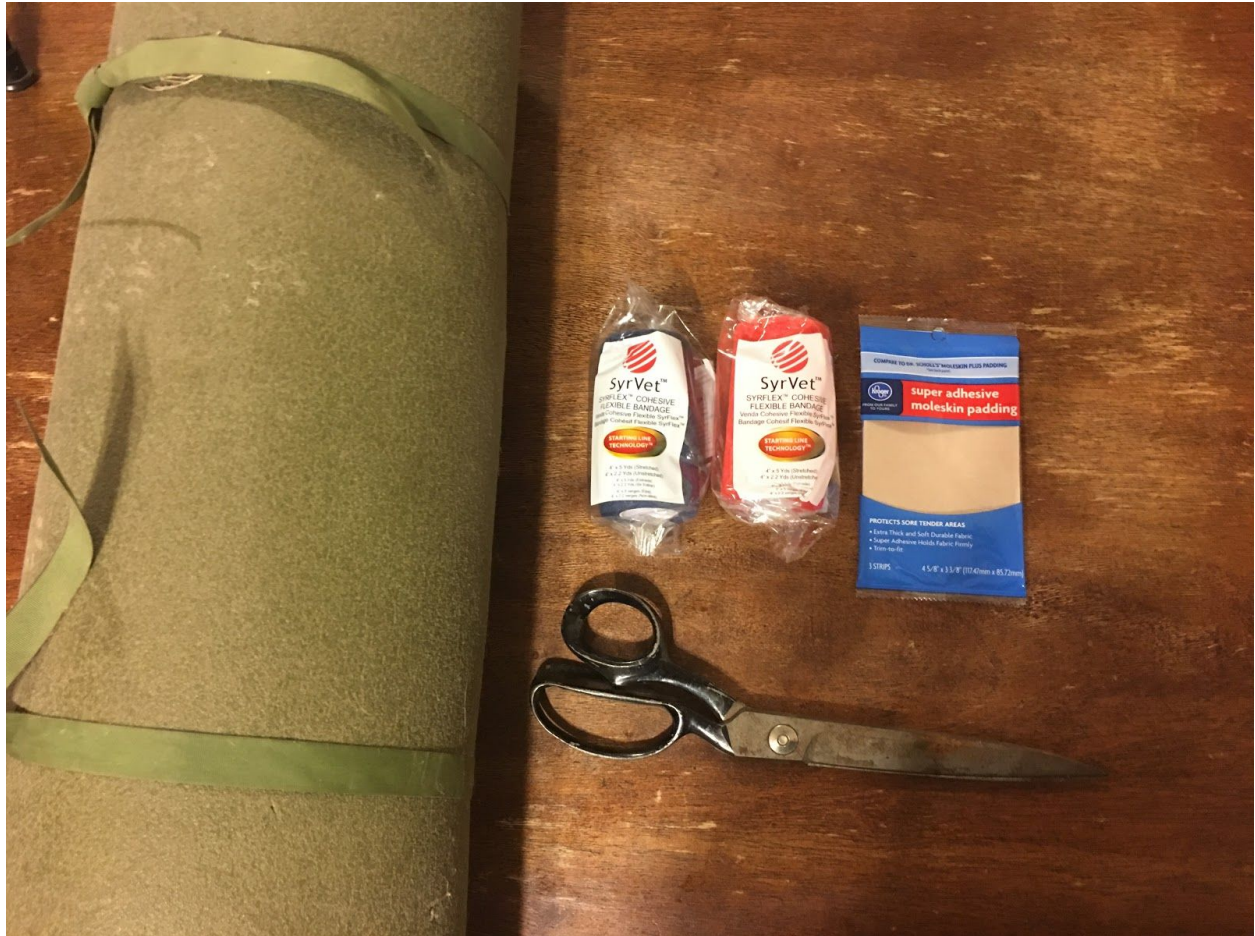
It should be common knowledge that a solid cheek weld is needed is needed for proper sight alignment, which is needed for NPOA. If you don't have proper sight alignment everything else doesn't really matter.



Cheek weld is the relation between your Zygomatic Arch, above in red, and the top of the rifle's buttstock. The bottom of the arch should rest solidly on top of the buttstock.



As you can see she has a solid cheek weld, but her eye is well below the scope. She can't possibly have a clear sight picture. We will add a cheek riser to raise her head while keeping solid contact with the rifle.



Materials you will need:

Foam padding. I am using foam cut from a sleeping pad.

You can also use things like a mouse pad, craft foam, anti fatigue mats, etc. Any closed cell foam designed to support weight will work.

Cohesive bandage. It only sticks to itself, doesn't leave a residue, and holds very well and doesn't loosen. Coban is one brand. I used vet wrap, it's cheap and works great. You can find it at any ranch supply, generally in the horse section. It's used as leg wrap.

Moleskin or adhesive felt. This provides a comfortable barrier between the vet wrap and your face.

Clear and safe the rifle

Cut foam strips 1x4"



Tape 1 strip on buttstock

Get behind the rifle and check sight alignment



Tape a second piece of foam, and check alignment. This is still low.



Ahh, now we are there.



Make sure and check bolt throw or charging handle clearance. Trim as necessary.



Start wrapping with vet wrap, start just tight enough to hold foam, then progressively get tighter to lock everything in place.



Wrapped good and tight.



Add the Moleskin where the cheek touches.



Check again. Nice cheek weld Liz.

KSFlatlander